

A craggy, heather-covered hillside reserve overlooking the River Avon with an industrial history now important for wildlife.

Grid ref: ST 628 731

Cycle routes: www.betterbybike.info

Bus information to Summerhill Road:

www.travelwest.info

Time:
15-30 minutes circular walk

Distance:
0.36 miles for the easy route.
Longer route: 0.67 miles.

Route difficulty:
Moderate with some shallow steps and fairly steep uphill slopes that can be muddy and slippery. A shorter route is fairly level, suitable for wheelchair users and has fantastic views.

Access:
For full accessibility use the Malvern Road entrance (BS5 8JA).

Parking:
Please park with consideration for residents.

Route description

This circular walk gives a flavour of what Troopers Hill has to offer including its distinctive chimney. Other challenging paths and trails around the reserve are well worth exploring. Sturdy footwear essential. The map overleaf marks views, seats, bins and other features.

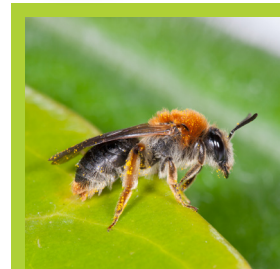
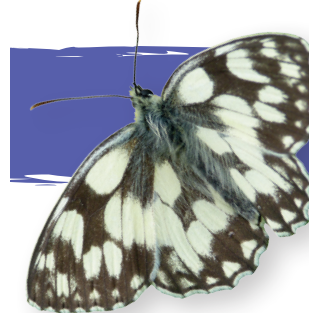
From Malvern Road (both routes):

- 1 Enter The Field and turn right following the track until you reach the corner beside a large upright stone from where a tall chimney is visible.
- 2 Take the surfaced path that leads to the chimney, sit down and enjoy the views. Look out for bare patches of soil with small holes, sometimes with small heaps of earth around them, particularly in May. These might be nesting sites for mining bees.
- 3 Easy route: Retrace your steps to the start point.

Longer route: With your back to the interpretation panel, make your way over the grass to the path behind the chimney, near the allotments fence. Turn right. Look out for ant hills on your left – favoured places for feeding by green woodpeckers.
- 4 Descend the shallow steps and take the faint, grassy route that bears right in front of an old oak tree.
- 5 Reach the T-junction and turn right, bearing right again to follow the path into a steep-sided gully that is rich with heather, broom and wildflowers in summer.
- 6 At the end of the gully, where you can see exposed faces of pennant sandstone, follow the path up onto flattish turf, bearing right. Notice the change in soil colour – remains of spoil from coal-mining.
- 7 At the small step down, turn right up the steps to return to (2). Turn left first to explore the fungi in autumn under the large birch tree. Look for the common lizard basking here from March onwards.



Friends of
Troopers Hill



Mining bee

© Ian Tew, EWARS



Chimney

© Mike A



Fly agaric

i For news, information, trails and activities or to help care for this reserve, visit: www.troopers-hill.org.uk or follow [@troopershill](https://twitter.com/troopershill) on Twitter, troopershill on Facebook, or email friends@troopers-hill.org.uk Tel: 0117 947 5037
For more specific information on disabled access to this site please visit: www.bristol.gov.uk/localnaturereserves



BRISTOL
2015 EUROPEAN
GREEN CAPITAL



- Troopers Hill
- Footpaths
- Woodlands
- Hedgerows
- Viewpoints
- Bench
- Steps
- Pedestrian access
- Wheelchair access
- Information panel
- Bin
- Dog bin
- Cycle access
- Route guide

0 50 100meters

© Copyright Bristol City Council - Bristol Design, March 2016 BD7179